

Features & Benefits

Rugged Die-Cast Aluminum Housing for Use in Extreme Environments

Photocell and Mounting Arm Included with Fixture

Mounts to 1 1/4" IPS or Optional Arm can be Mounted to any Vertical Pole or Wall

Frosted Acrylic Lens for Even Light Distribution and no Glare

UL Listed for Wet Location; RoHS Compliant

5-Year Limited Warranty



Technical Parameters

Power	Light Output	Power Input	Operating Temperature	Efficacy
45W - 70W	5,000- 7,000lm	120-277V	-40°F - 113°F	Up to 111 lm/W
Color Temperature	CRI	Certifications	Photocell	Surge Protection
4000K, 5000K	70 CRI	UL	Twist Lock	10kVA
Mounting Options	Color Temperature	Finish		
90° Mounting Arm	4000K, 5000K	DB, SG		

Performance Data

5000K		
LED Watts	Lumens	LPW
45W	5,000 lm	111 lm/W
70W	7,000 lm	100 lm/W

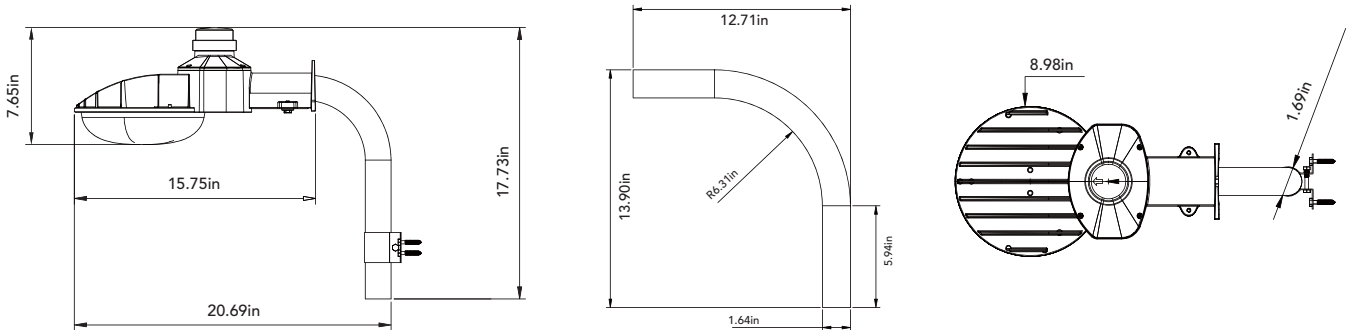
4000K		
LED Watts	Lumens	LPW
45W	4,927 lm	109 lm/W
70W	6,700 lm	96 lm/W

Ordering Information *Example: ADD-45W-50K-DB*

(Optional)

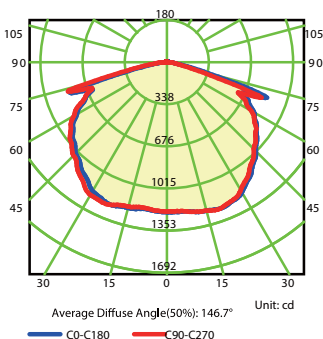
Model	Wattage	Voltage	CCT	Finish	Controls
ADD Dusk to Dawn ADD Series	45W 70W	Blank 120-277V	40K 4000K 50K 5000K	DB Dark Bronze G Silver Grey	P Photocell

Dimensions

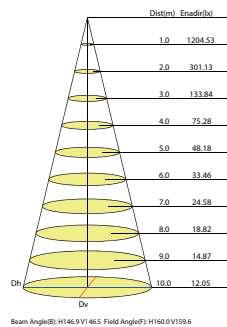


Photometrics

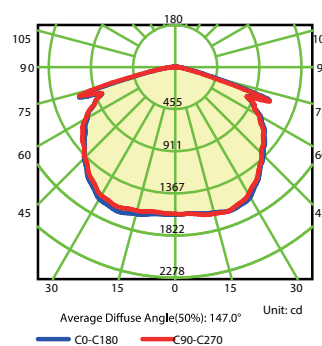
Luminous Intensity Distribution Curve



Illuminance at a Distance



Luminous Intensity Distribution Curve



Illuminance at a Distance

